

## DMU series

---

DMU 40 / DMU 40 Plus / DMU 40 Pro

---

DMU 50

---



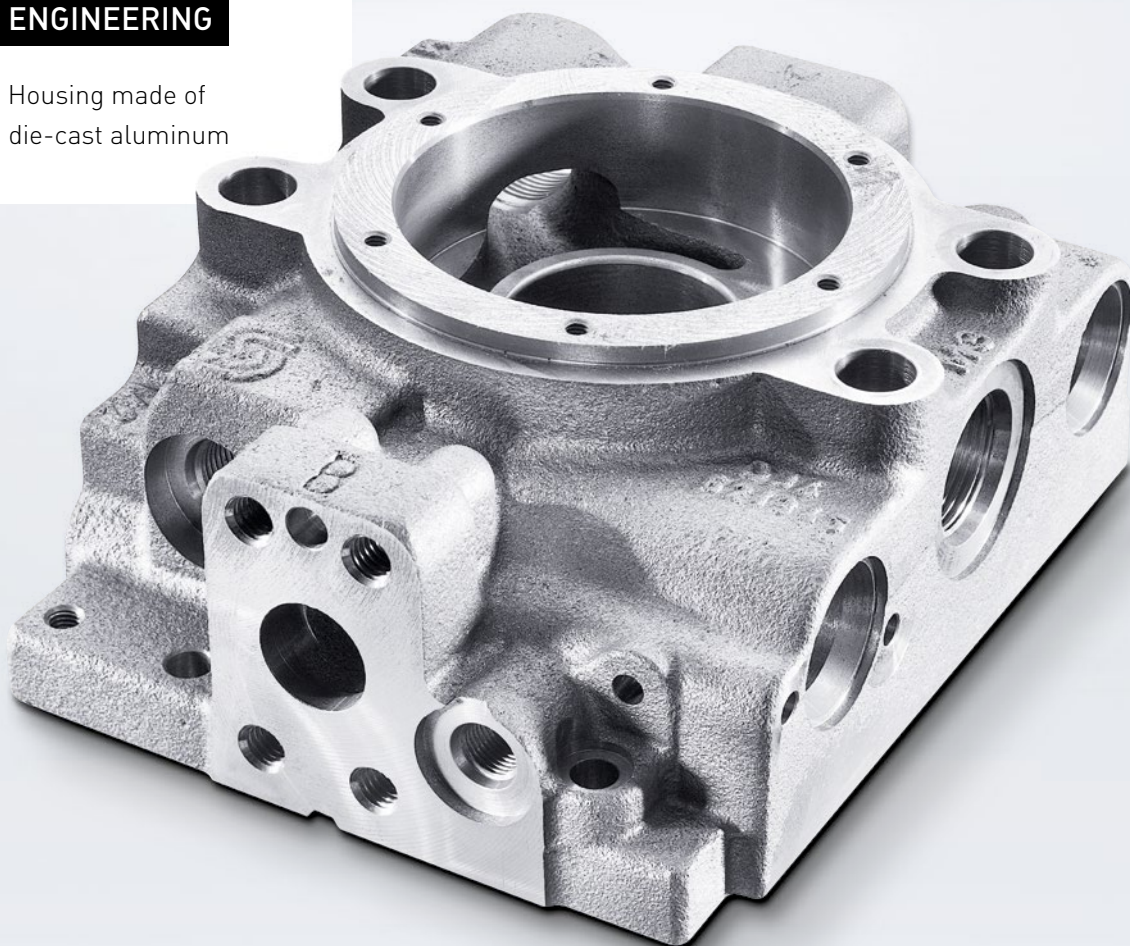
DMU series

## Universal design the perfect solution for any requirement

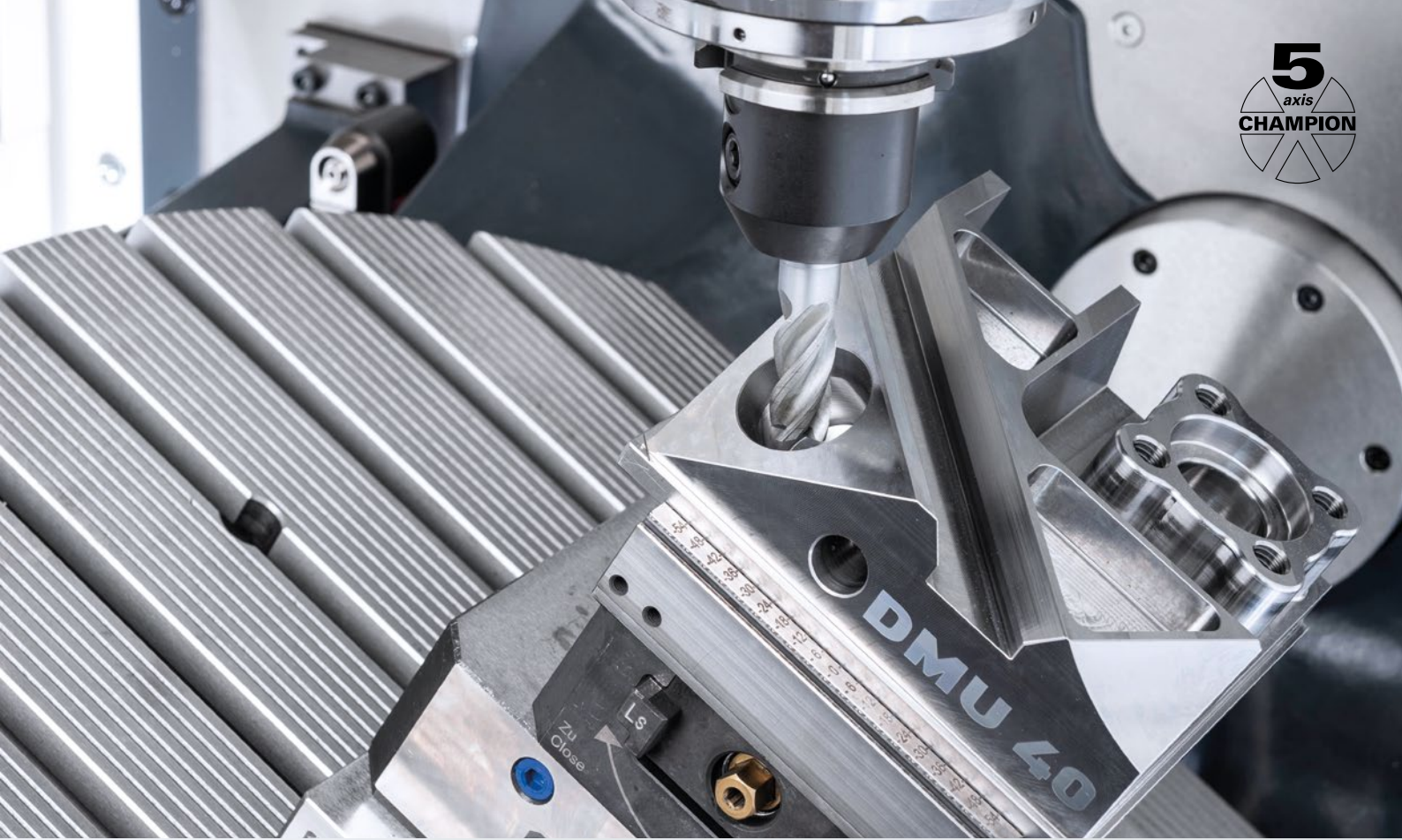
- + Thanks to their universal character, the machines in the DMU series offer the solution for 5-axis simultaneous machining in a wide range of industries
- + Maximum flexibility in the equipment - depending on the processing requirements the optimum machine
- + The DMU series has stood for maximum precision and quality in the field of 5-axis simultaneous machining for more than 25 years

### MECHANICAL ENGINEERING

Housing made of  
die-cast aluminum







## MEDICAL TECHNOLOGY

Prosthesis made of aluminum



## TOOL CONSTRUCTION

Cutter head made from tool steel



## AUTOMOTIVE

Aluminum holder



## MOTORSPORT

Hydraulic component made of aluminium



## JOB SHOP

Valve housing made of aluminum



## AEROSPACE

Aluminium chassis component



## DMU series

# Universal, compact and powerful

### + Highest precision and quality:

The DMU series offers outstanding precision and surface quality through highly dynamic 5-axis machining

### + Flexibility and versatility:

Thanks to their universal character and wide range of options, DMU machines are extremely flexible and versatile – ideal for various industries and applications.

### + Innovative technology and user-friendliness:

With state-of-the-art technology and intuitive control systems, DMU machines guarantee simple operation with maximum efficiency.



## DMU 40

Entry into 5-axis simultaneous machining with DMG MORI

### Workpiece dimensions

Footprint	
Traverse distances X/Y/Z	mm
Table size	mm
Loading weight	kg
Workpiece dimensions	mm

### DMU 40

Footprint	< 5.1 m <sup>2</sup>
Traverse distances X/Y/Z	550/450/420
Table size	ø 505 × 500
Loading weight	300
Workpiece dimensions	

### DMU 50 3<sup>rd</sup> Generation

Footprint	< 6.5 m <sup>2</sup>
Traverse distances X/Y/Z	650/520/475
Table size	ø 630 × 500
Loading weight	300
Workpiece dimensions	



MORE THAN  
**25 YEARS**  
5-AXIS  
EXPERTISE

## DMU 50 3<sup>rd</sup> Generation

The benchmark for precision, flexibility and innovative technology



*5-axis simultaneous machining par excellence - the DMU series sets new standards in precision, versatility and technological progress.*

**Fabian Suckert**  
Managing Director  
DECKEL MAHO Seebach



### ALWAYS FITTING

- + Extensive range of spindles
- + High flexibility thanks to a large B-axis swivelling angle of  $-35^{\circ}$  to  $+110^{\circ}$
- + Most compact 5-axis universal machine with an installation width  $< 2$  m (DMU 40)
- + Optimum chip fall and chip removal from the machine

### PRECISE

- + High rigidity based on a one-piece machine bed made of grey cast iron
- + Optimized 4-point support for stable machine installation
- + Extensive cooling measures enable very high long-term thermal stability (DMU 50 3<sup>rd</sup> Generation/DMU 40 Pro)

### ERGONOMIC

- + Optimum accessibility to the work area thanks to the large work area door, an optimum loading height (800 mm) and a short distance to the centre of the table
- + Best view into the workspace thanks to large viewing windows and optimized lighting
- + Easy loading of the tool magazine thanks to separate magazine loading from the front (DMU 50 3<sup>rd</sup> Generation/DMU 40 Plus/DMU 40 Pro)\*
- + Crane loading from above by opening the machine roof\* with the working area door

\*Not available for basic variant DMU 40

### CELOS X

- + CELOS X - the future-proof solution in production
- + CELOS Xperience for simple operation, extended spindle hours and energy efficiency
- + ERGOline X - Innovative & ergonomic control panel and 24" multi-touch screen
- + Machine signals via OPC-UA, MTconnect and MQTT

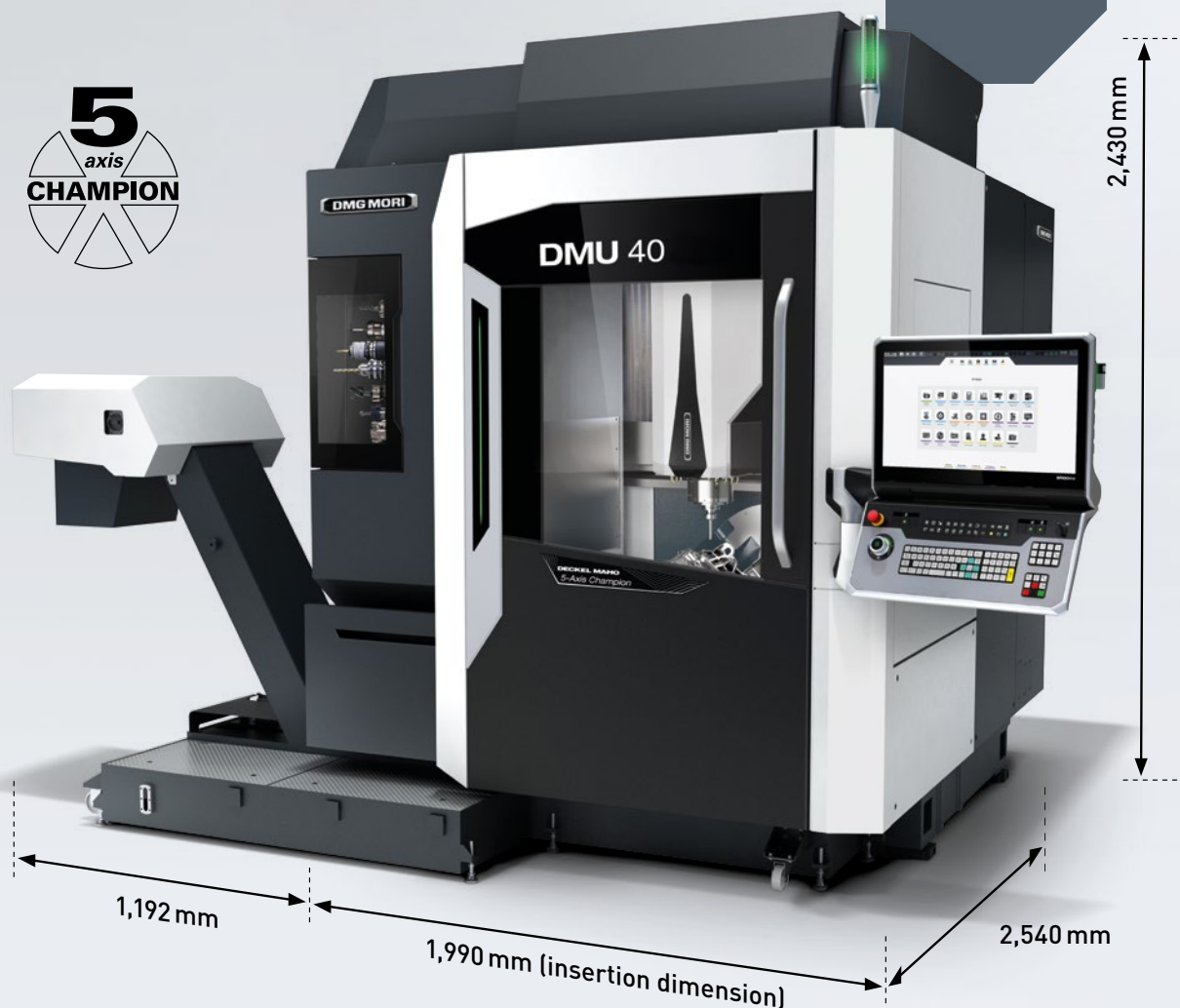
DMU series

## Solution-orientated – The machines in the DMU series are the answer when it comes to 5-axis machining

- + Solution-oriented entry due to easy configuration of the 3 basic machine types of the DMU 40
- + Still, high degree of flexibility in the specification with maximum focus on the performance of the individual machine
- + Simple configuration, also in connection with the entry into automation in the 5-axis simultaneous area
- + Automation of the machines without restricting access to the work area

**>20%**  
SMALLER THAN  
DMU 50 3<sup>rd</sup> Gen.

FOOTPRINT ONLY  
**5.05 m<sup>2</sup>**





### DMU 40

- + 12,000 rpm inline spindle
- + Tool magazine with 24 places (without set-up aid)
- + Chip tray with coolant tank 125 l
- + Installation area < 5.1 m<sup>2</sup> (without chip conveyor)
- + CELOS with SIEMENS

### DMU 40 Plus

- Supplement to the basic machine**
- + 15,000 rpm speedMASTER spindle with 36 month warranty
  - + Tool magazine with 30 pockets SK40 (with set-up aid)
  - + Direct absolute displacement encoders
  - + Passive cooling of all main components

### DMU 40 Pro

- Supplement to the DMU 40 Plus**
- + 20,000 rpm speedMASTER spindle with 36 months warranty
  - + Active cooling of all main components
  - + Rapid traverse X/Y/Z: 42/42/30 m/min

### DMU 50 3<sup>rd</sup> Generation

- + speedMASTER spindles up to 20,000 rpm or 200 Nm with 36 months warranty
- + Tool magazine with up to 120 places
- + Direct absolute position measuring systems and active cooling of all main components
- + Installation area 6.5 m<sup>2</sup> (without chip conveyor)

## OPTIONAL

CELOS with HEIDENHAIN, Spindle with BT 40 | CAT 40, Chip disposal package incl. chip conveyor

CELOS with HEIDENHAIN, Spindle with HSK A63 | BT 40 | CAT 40, tool magazine with 60 places, chip disposal packages incl. ICS up to 80 bar

CELOS with HEIDENHAIN, Spindle with HSK-A63 | BT 40 | CAT 40, tool magazine with 60 places, chip disposal packages incl. ICS up to 80 bar

**Customized special options through to complete technology integration (turnkey solutions)**

**Maximum performance and dynamics thanks to very high rapid traverse (42 m/min)**

## AUTOMATION

Automation interface for PH 150, Robo2Go Milling and other automation solutions

Automation interface for PH 150, Robo2Go Milling and other automation solutions

**From standard automation, e.g. Robo2Go Milling or PH Cell. Robo2Go Milling or PH Cell, to fully automated production cells with workpiece and pallet handling**

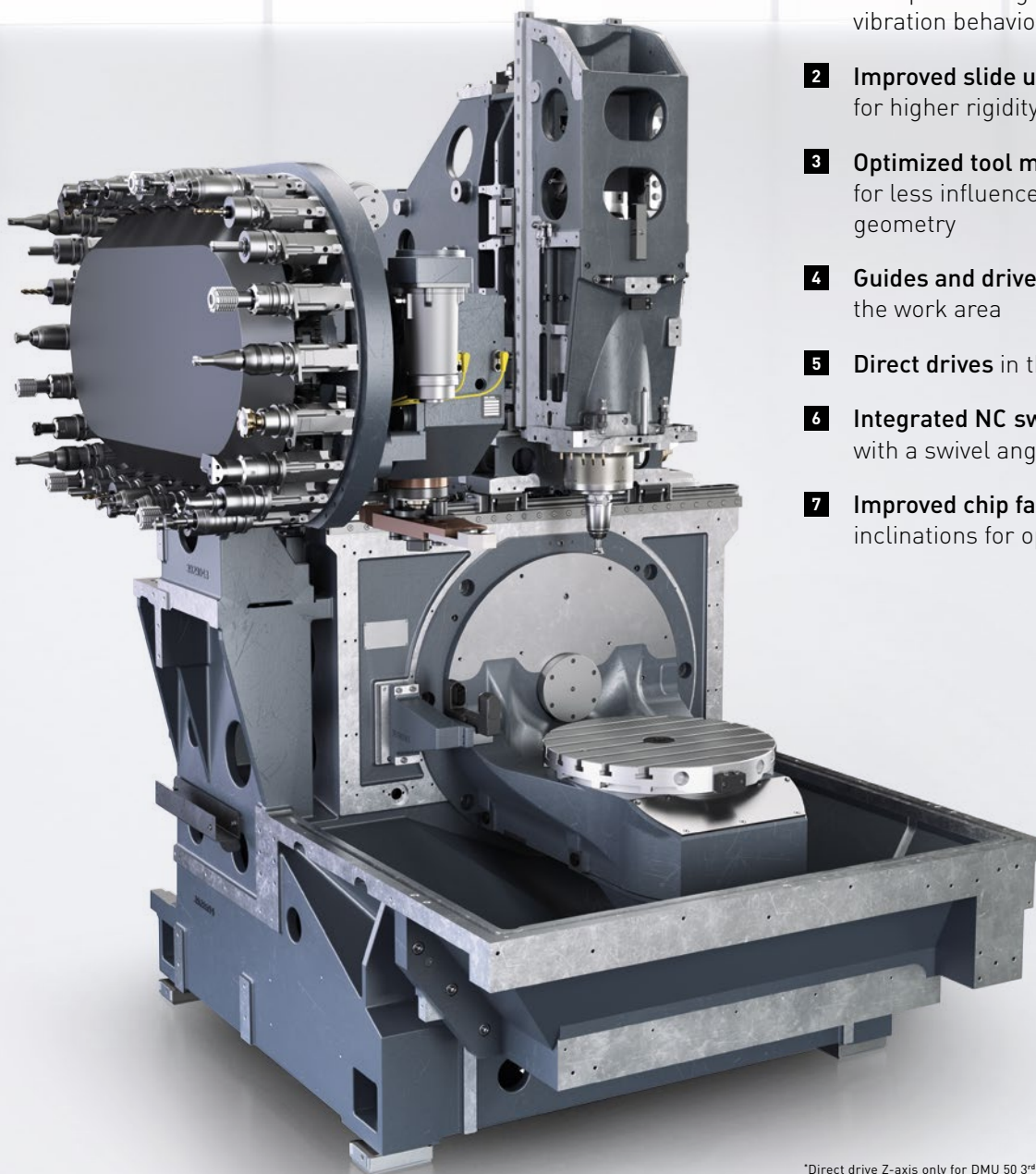


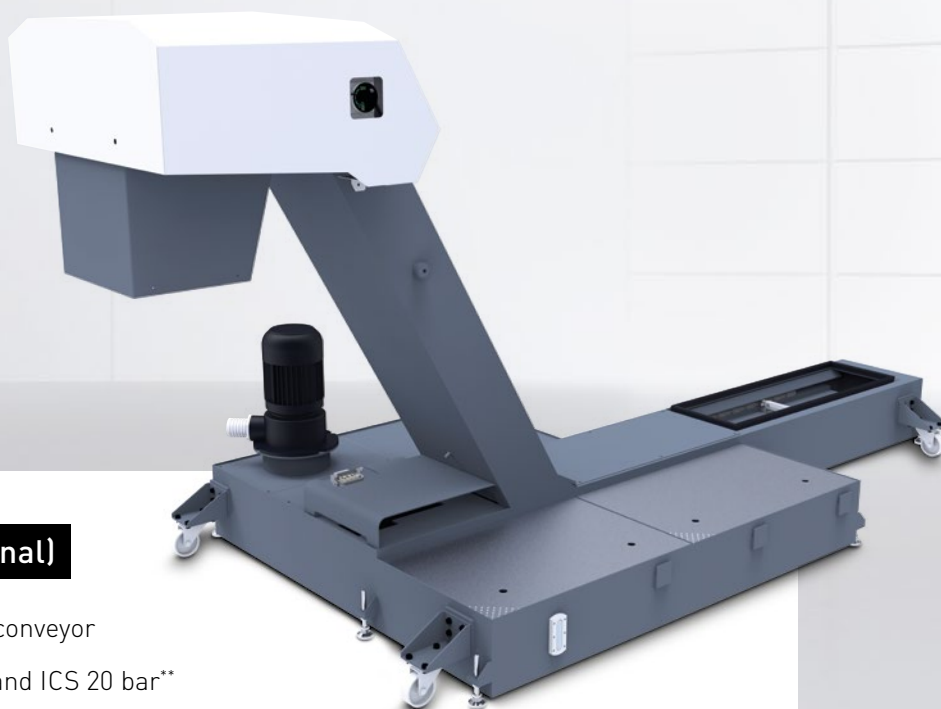
DMU series

# Stable machine concept for precision and accuracy

- + Solid machine concept based on the DMU 50 3<sup>rd</sup> Generation
- + Use of high quality components which have been tried and tested in the DMG MORI group

- 1 FEM-optimized one-piece cast bed**  
For optimum rigidity and optimized vibration behavior
- 2 Improved slide units**  
for higher rigidity in all linear axes
- 3 Optimized tool magazine connection**  
for less influence on the machine geometry
- 4 Guides and drives** outside or above the work area
- 5 Direct drives** in the X and Y axis\*
- 6 Integrated NC swivel-rotary table**  
with a swivel angle of  $-35^{\circ}$  to  $+110^{\circ}$
- 7 Improved chip fall** with steep inclinations for optimum chip fall





## CHIP DISPOSAL/ICS (optional)

Chip disposal by means of a chip conveyor

Chip disposal with chip conveyor and ICS 20 bar\*\*

Chip disposal with belt filter system ICS 40 bar  
(600 l tank) / ICS 80 (980 l tank, frequency-controlled)\*\*

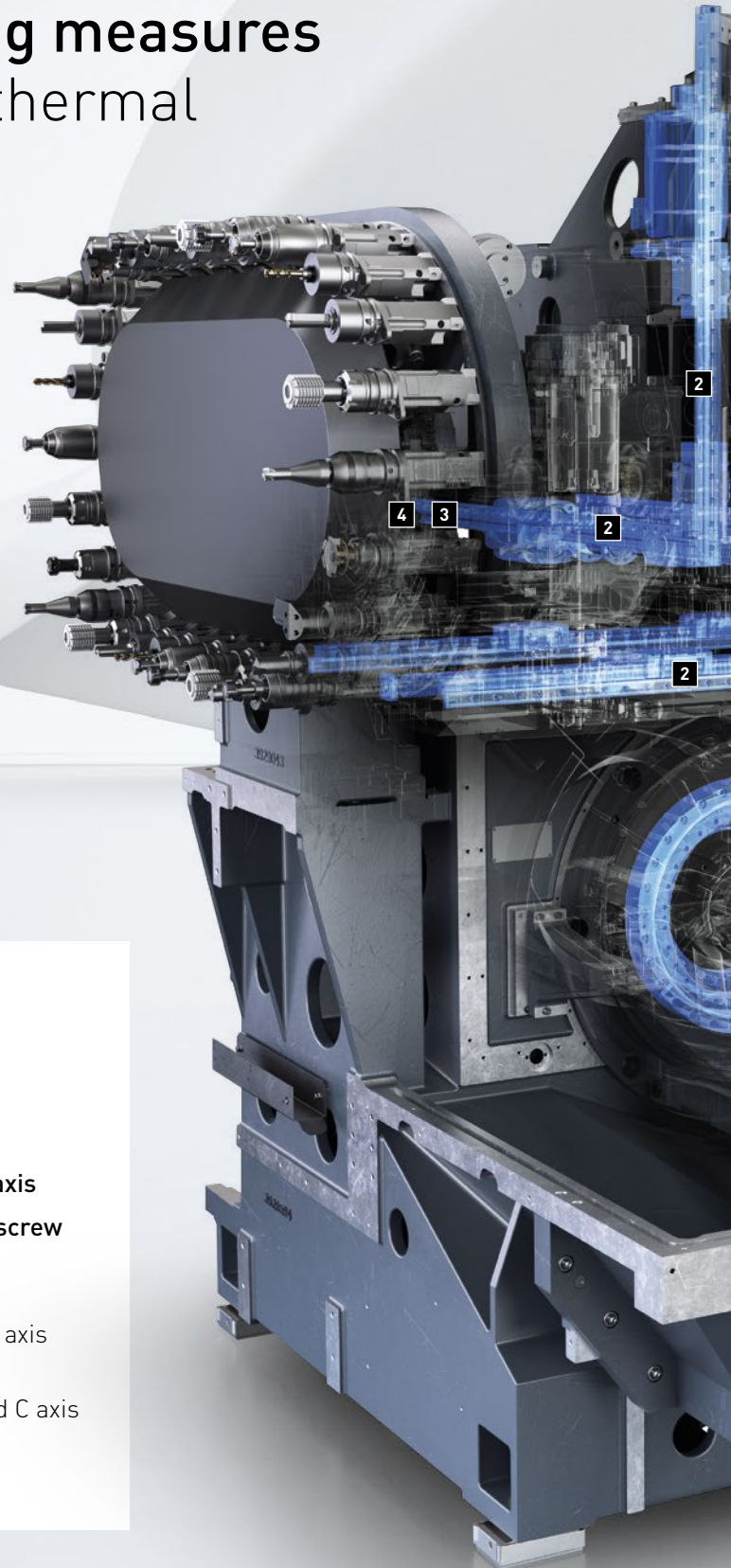
	DMU 40	DMU 40 Plus	DMU 40 Pro	DMU 50 3 <sup>rd</sup> Generation
<b>24 Tools</b>	SK 40			
<b>30 Tools</b>		SK 40/HSK-A63	SK 40/HSK-A63	SK 40/HSK-A63
<b>60 Tools</b>		SK 40/HSK-A63	SK 40/HSK-A63	SK 40/HSK-A63
<b>120 Tools</b>				SK 40/HSK-A63

	DMU 40	DMU 40 Plus	DMU 40 Pro	DMU 50 3 <sup>rd</sup> Generation
<b>inlineSpindel 12,000 rpm</b> (95 Nm, 15 kW – 40 % ED)	standard (SK 40)			
<b>speedMASTER Spindel 15,000 rpm</b> (111 Nm, 21 kW – 40 % ED)		standard (SK 40/HSK-A63)		standard (SK 40/HSK-A63)
<b>speedMASTER Spindel 15,000 rpm</b> (200 Nm, 46 kW – 40 % ED)				optional (SK 40/HSK-A63)
<b>speedMASTER Spindel 20,000 rpm</b> (130 Nm, 35 kW – 40 % ED)			standard (SK 40/HSK-A63)	optional (SK 40/HSK-A63)

DMU series

## Best-in-Class cooling measures for a high degree of thermal long-term stability

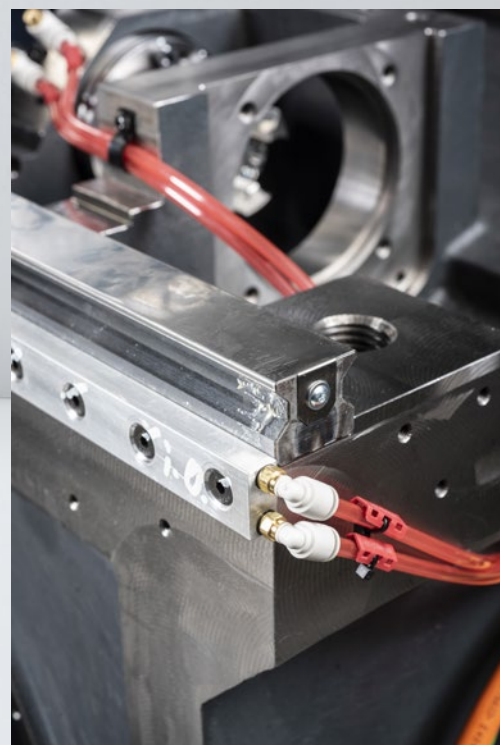
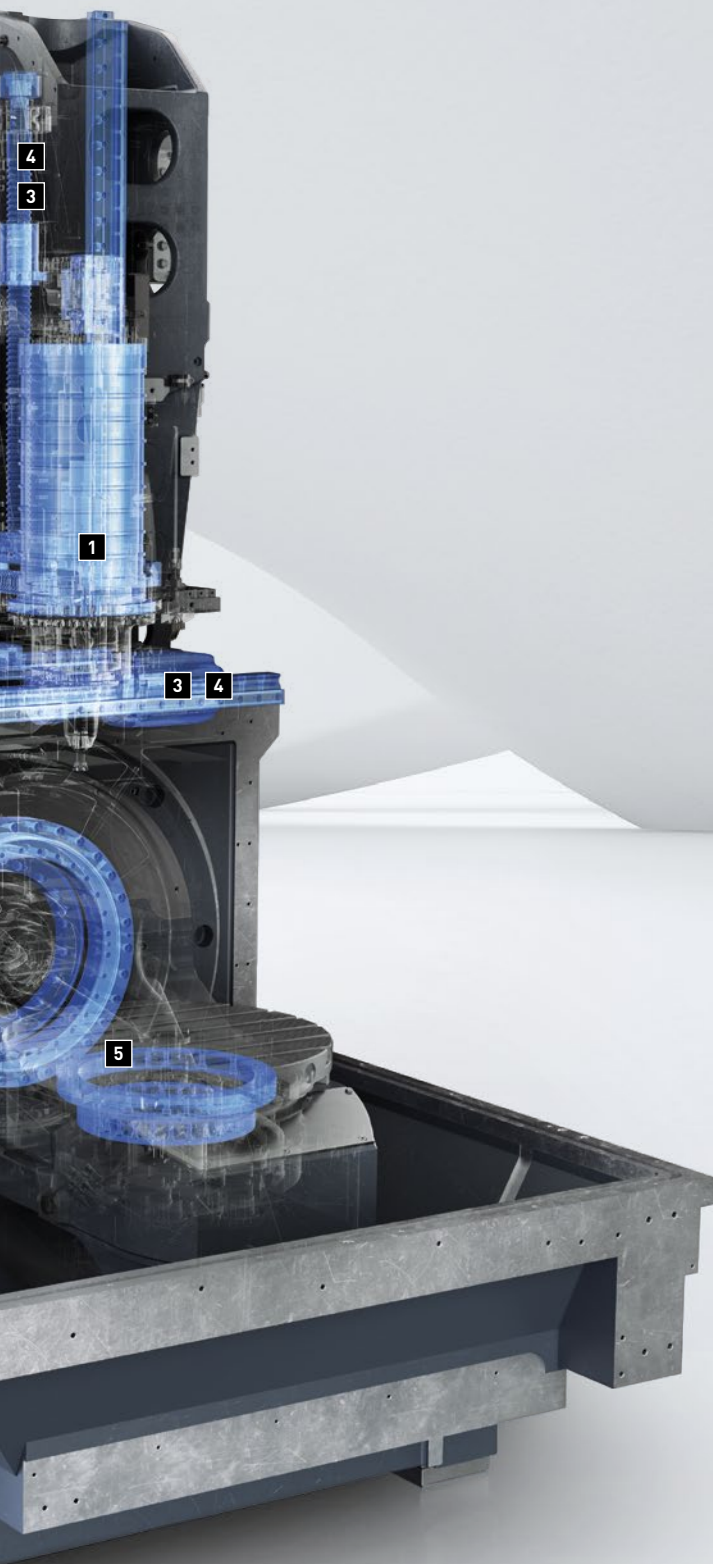
- + The DMU impresses with its extensive cooling measures as standard (except for the DMU 40 entry-level machine)
- + High thermal long-term stability with extremely high positioning accuracy of 5 µm



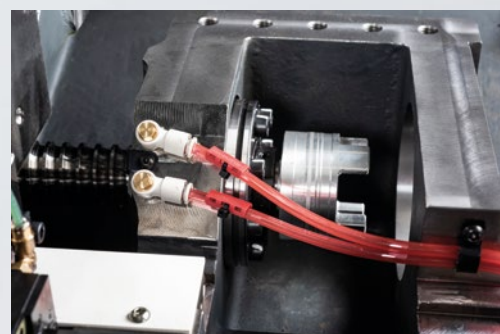
### COMPREHENSIVE COOLING MEASURES

- 1 Work spindle**  
Spindle motor cooling
- 2 Cooling of the guide rails of the X/Y/Z axis**
- 3 Cooling of the bearing block of the ball screw drive nuts in the X/Y/Z axis**
- 4 Cooling of the motors**  
Cooling of the motor flange in the X/Y/Z axis
- 5 Cooling of the NC round table**  
Cooling of the table bearings in the B and C axis



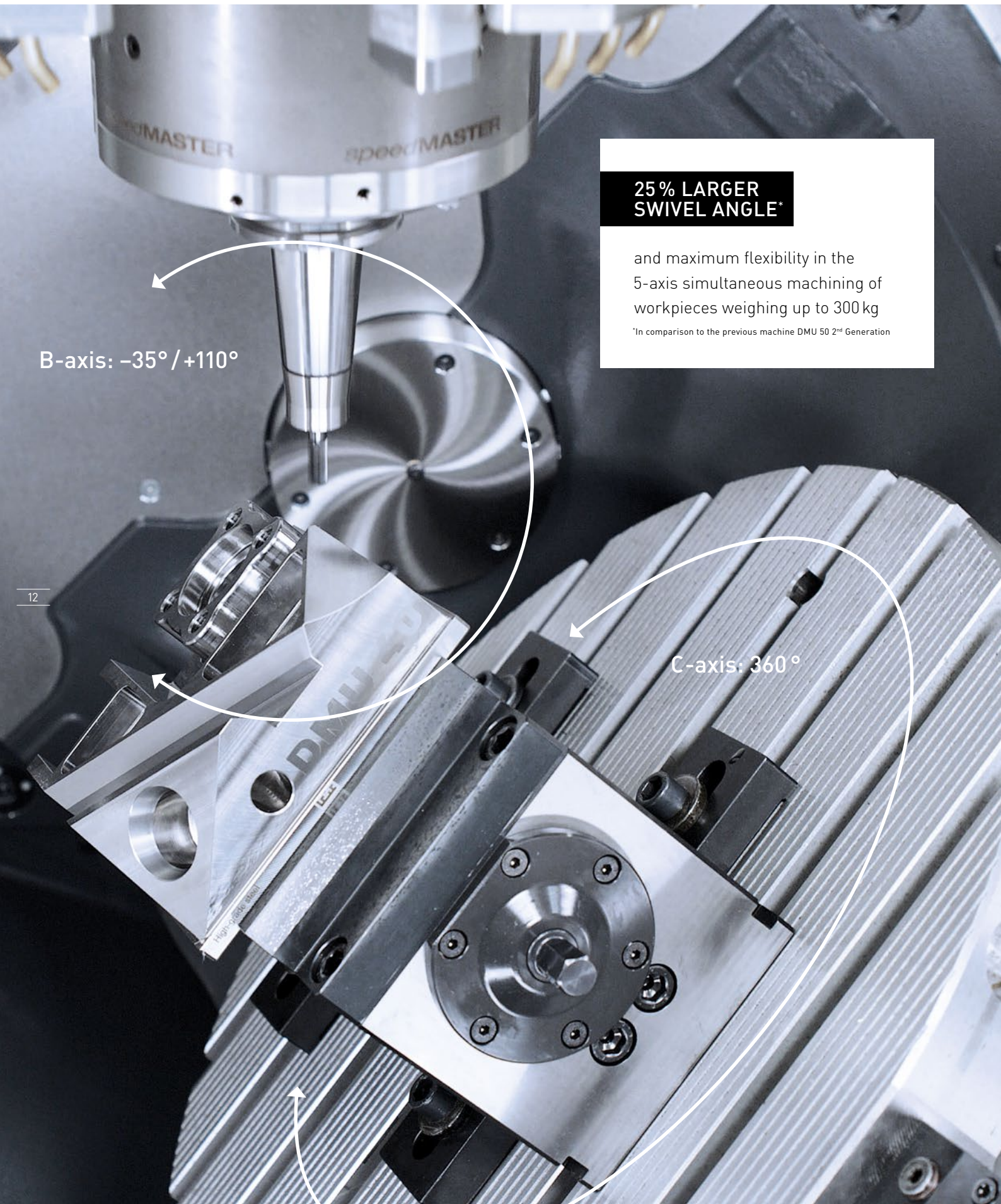


Cooling of the linear guide pressure bars



Cooling of the bearing block





**25% LARGER  
SWIVEL ANGLE\***

and maximum flexibility in the  
5-axis simultaneous machining of  
workpieces weighing up to 300 kg

\*In comparison to the previous machine DMU 50 2nd Generation

B-axis:  $-35^{\circ} / +110^{\circ}$

C-axis:  $360^{\circ}$

Comprehensive cooling for a high degree of work table thermal stability



DMU series

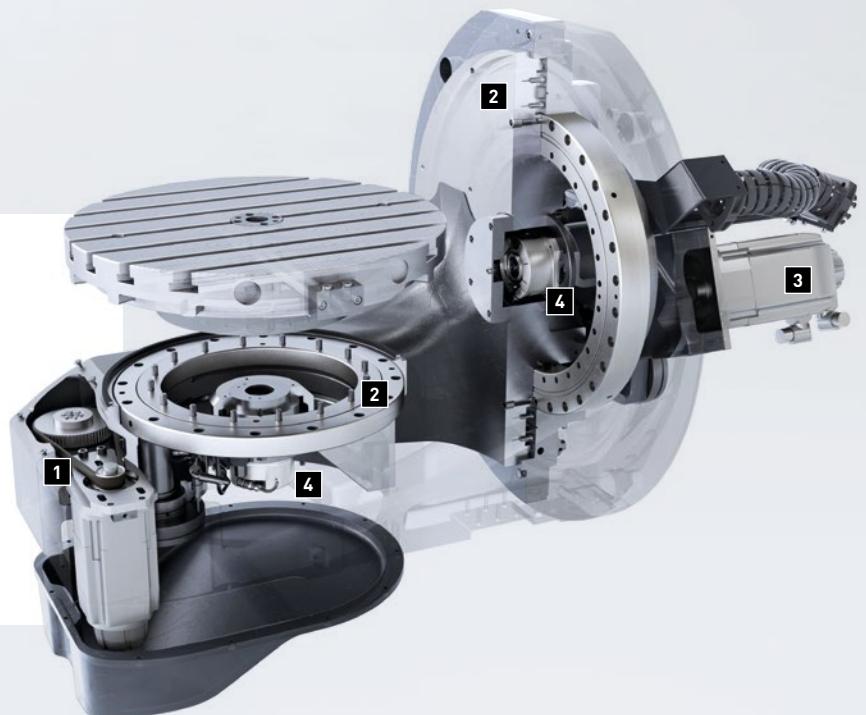
## Patented swivel rotary table for 5-axis simultaneous machining

- + Integrated, patented NC swivel rotary table enables 5-axis simultaneous machining
- + 5-axis complete machining in a single clamping with more precision and shorter set-up times
- + B-axis swiveling range of  $-35^{\circ}$  to  $+110^{\circ}$  of workpieces
- + Large work table with  $\varnothing 630 \times 500$  mm for the DMU 50 3<sup>rd</sup> Generation and  $\varnothing 505 \times 500$  mm for the DMU 40 for processing workpieces up to 300 kg

13

### INTEGRATED NC SWIVEL-ROTARY TABLE

- 1 C-axis drive
- 2 B/C axis precision roller bearing
- 3 B-axis drive
- 4 B/C axis rotary encoder





DMU series

# Perfect automation capability by means of flexible and highly productive solutions from DMG MORI



## PALLET HANDLING WITH PH 150

- + Simple and low cost automation solutions for up to 24 pallets (ITS 148/ø148 mm) and up to 10 pallets (UPC/320×320 mm)
- + Max. workpiece dimensions 400×400×400 mm
- + Complete retention of accessibility to the work area from the front and from above
- + Space requirement of just 2.9 m<sup>2</sup>

Pallet size	number	Max. load
400 × 400 mm	6	250 kg
320 × 320 mm	10	150 kg (250 kg <sup>1</sup> )
ø 210 mm	12	150 kg

<sup>1</sup>Optional



## PALLET HANDLING WITH PH CELL 300

- + Modular pallet handling for up to 40 pallets on a floor space of 10.7 m<sup>2</sup>
- + Handling of different pallet sizes in one system
- + Up to 300 kg transfer weight (workpiece incl. pallet)
- + Separate set-up station for ergonomic pallet set-up parallel to production time
- + Convenient and simple control of the automation directly via the machine control panel

Pallet size	number*
320 × 320 mm	40
345 × 345 mm	40
400 × 400 mm	32
500 × 500 mm	24
ø 400 mm	32
ø 500 mm	24

\*One or two shelving modules available in one system. The shelving modules can be equipped with different numbers of shelves and pallet sizes.

DMU series



## WORKPIECE HANDLING WITH WH CELL

- + Space-saving automation solution for high autonomy
- + Handling of workpieces weighing up to 35 kg (including gripper);  
max. length: 300 mm  
max. width: 200 mm  
max. height: from 100 mm
- + Perfect coordination of robot, gripper, workpiece and other options for perfect coordination between machine and process chain
- + Virtual commissioning using the digital twin reduces on-site commissioning time by 80 %





## WORKPIECE HANDLING WITH Robo2Go MILLING

- + Strong design for all requirements: **robot load capacity of either 25 or 35 kg**
- + Handling of **components in the dimensions 20 - 200 mm**  
(Further dimensions optionally available)
- + **External and internal gripping** as standard
- + **Customized workpiece storage** possible
- + **Pressure reduction** for thin-walled components
- + **Very good accessibility**  
to the workpiece storage
- + **Optional:**
  - Stacking of workpieces
  - Turning station for automated  
6-sided complete machining



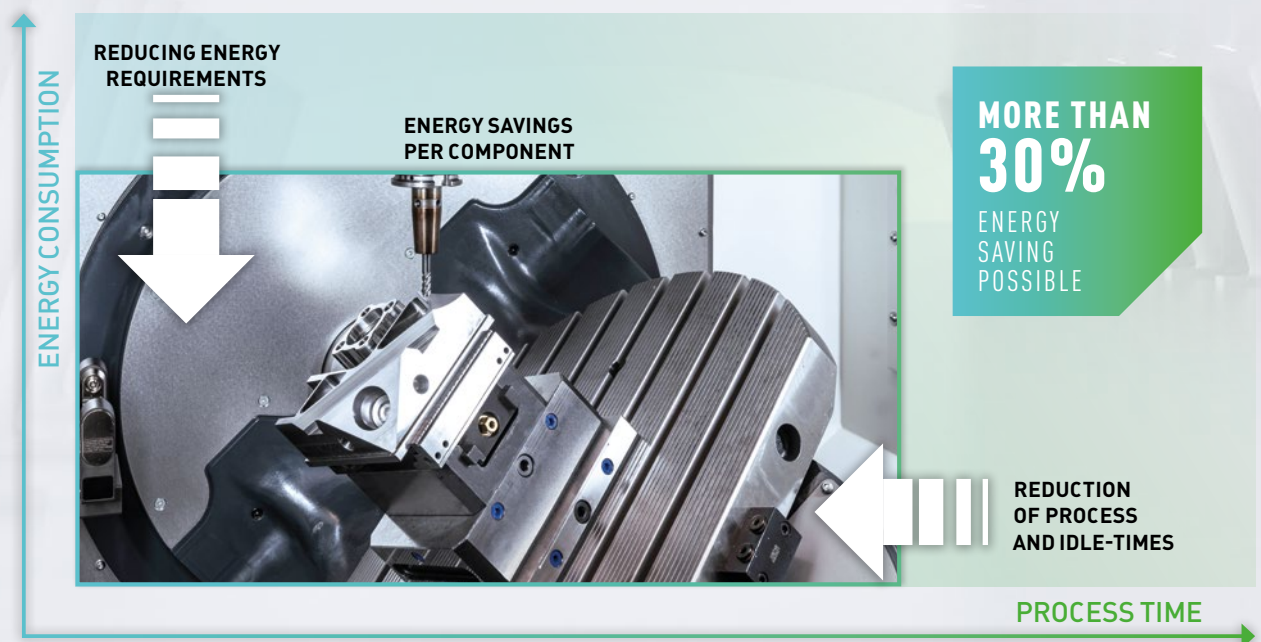
FULL  
ACCESSIBILITY  
TO MACHINE  
THANKS TO SIDE  
LOADING



## ENERGY-EFFICIENT MACHINE TOOLS

# GREENMODE – sheer energy efficiency

Increasing energy efficiency in industry is an important factor for achieving climate protection targets. Furthermore, a low energy requirement is becoming increasingly economically important due to the increasing energy prices. DMG MORI is redefining energy efficiency in manufacturing with **GREENMODE**. Considerable savings can be made, particularly in process and machine cooling, which often amount to as much as 70 % of the power consumption of a machine tool. DMG MORI has succeeded in reducing the energy requirement by more than 30 % using innovative hardware and software components. In this way, DMG MORI helps you on the way to energy-efficient production.



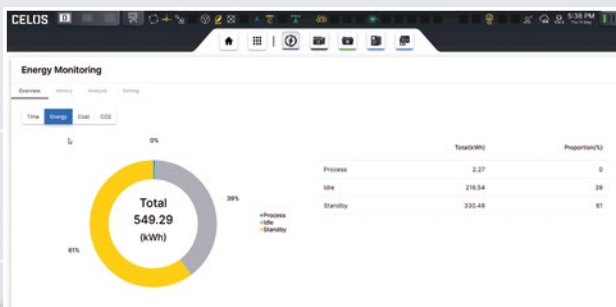
## Measures for better energy efficiency

- + **Braking energy regeneration**
- + **LED lighting**
- + **High-efficiency coolers**  
Best-in-class cooling units
- + **Advanced Auto Shutdown**  
Automatic Standby & Wake-up
- + **Adaptive infeed control**  
Shorter machining times
- + **Advanced Energy Monitoring**  
Component-specific energy measurement
- + **Compressed air monitoring\***  
Quick leak detection
- + **Frequency-controlled pumps**  
Efficient coolant supply
- + **Adaptive coolant supply**  
Requirement-oriented coolant supply
- + **zeroFOG Emulsion mist separator**  
Easy maintenance and efficient operation

\*Available from mid-2025

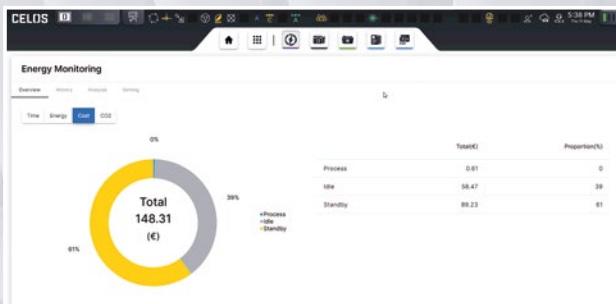
## Advanced Electrical Energy Monitoring

How much energy did the process require? What are the energy costs for the component? How high were the CO<sub>2</sub> emissions for production? DMG MORI's Advanced Energy Monitoring answers these questions reliably and transparently. In addition to documentation, it can also be used to quickly evaluate your own process improvements.



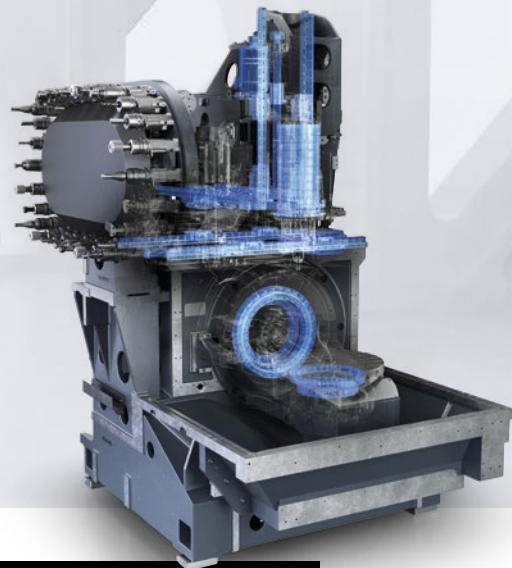
### FULL TRANSPARENCY FOR ENERGY REQUIREMENTS

- + Measurement of the electrical energy demand
- + Machine and component-specific Evaluation of the energy requirement
- + Automatic calculation of CO<sub>2</sub> emissions and energy costs



## Highly efficient coolers

DMG MORI stands for precision and maximum machining accuracy. An important prerequisite for this is the thermal stability of the machine tool. In addition to design measures, active cooling systems are used. However, the active cooling of the machine and control cabinet can account for up to 45% of the total energy requirement of a machine. In order to reduce the energy requirement while maintaining the same level of precision, DMG MORI relies on state-of-the-art technologies with climate-friendly coolants.



### EFFICIENT MACHINE COOLING

- + Use of water admixture technology or frequency-controlled units
- + Particularly high efficiency in partial load operation
- + Use of refrigerants with reduced greenhouse gas potential
- + Water-water cooler optionally available (on request)



## DX – DIGITAL TRANSFORMATION

# CELOS X – The future-proof solution for manufacturing

CELOS X platform offers a holistic solution for the digital transformation. Combined with the ERGOline X control panel, manufacturing companies will increase their competitiveness worldwide.

CELOS X consists of the two components **CELOS Xchange**, the open, secure and scalable data platform, and **CELOS Xperience**, which gives access to all applications and systems within the CELOS X ecosystem. This enables a comprehensive and seamless digital experience for the user with the goal of easy machine operation, extended spindle hours while maximizing energy efficiency. CELOS X is therefore the centerpiece of the digital transformation (DX) and a significant contribution to DMG MORI's Machining Transformation (MX) strategy.



Further information on  
CELOS X can be found at:  
<https://celos.dmgmori.com>

## HIGHLIGHT APPS



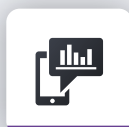
### Operator Workbook

Optimal order processing in the office and throughout the shopfloor.



### Application Connector

Operate IT-systems directly on the control panel.



### Monitoring

Increase planning reliability and productivity through digital transparency.



### Tool Master

Manage tools directly on the machine.



### Energy Saving

Optimize the machine's carbon footprint by managing and reducing energy consumption.



### Energy Monitoring

Track and monitor the energy consumption of the machine.

3

GOALS

&gt;30

APPS

&gt;300

FEATURES



ALL YOUR DATA IN  
**CELOS Xchange**  
 POWERED BY DMG MORI CONNECTIVITY

ALL APPS IN  
**CELOS Xperience**



## EASY OPERATION

In the manufacturing industry, the userfriendliness and ease of operation of machine tools plays a decisive role for the efficiency and productivity.

### ADDED VALUE

- + Faster programming
- + Reduction of errors
- + Increased efficiency



## EXTENDED SPINDLE HOURS

In addition to easy operation, productivity is another crucial parameter, which requires a holistic view across all production processes.

### ADDED VALUE

- + Optimization of set-up processes & capacity planning
- + Shorter processing times and order changes
- + Increased machine availability



## ENERGY EFFICIENCY

The energy efficiency of machine tools is of utmost importance to DMG MORI and CELOS X makes a valuable contribution to this, adding direct value to the customer.

### ADDED VALUE

- + Real-time monitoring of energy consumption
- + Automated adaptation of energy requirements to machining processes
- + Optimized & demand-driven air and cooling lubricant supply

## CONTROL TECHNOLOGY

# ERGoline X – Innovative control panels for every type of controller

The ERGoline X control panel provides the machine operator with an even more intuitive user experience, whereby the ergonomics and the functionality in particular have been optimized. The ERGoline X control panel gives the user access to CELOS *Xperience* and the native NC controller.

## HEIDENHAIN TNC 7

- + Increase maximum flexibility and efficiency
- + Select and arrange work spaces in a task-oriented way
- + 3D simulation, accurate to the last detail
- + Tabs for opening up to 9 programs in parallel
- + Compatibility with previous TNC 640 controller
- + Graphically assisted measurement of both clamping materials and components



**24" ERGoline X Panel**  
with HEIDENHAIN  
and CELOS X



## CONNECTIVITY by DMG MORI

- + Standard connectivity thanks to integrated IoTconnector
- + MDE (Machine Data Recording) possible
- + Automatic output of at least 17 standardized production status signals
- + Openness to third-party products
- + Communication in accordance with standard protocols:

**OPC UA** **MTConnect** **MQTT**

## SMARTride

- + Integrated panic function to instantly reduce the feed rate/rapid traverse to 0
- + Integrated haptic feedback to recognize 0% & 100%
- + Feed rate, rapid traverse & NC-start combined in one control element



## CELOS X

Uniform user interface,  
independent of the CNC control.

## SMARTkey

- + Compact credit card format
- + Personalized access rights depending on user level
- + Independently customizable SMARTkeys



**24" ERGOline X Panel**  
mit Sinumerik ONE  
und CELOS X

## SIEMENS SINUMERIK ONE

- + Maximum speed and shorter idle times
- + Standard SIEMENS control interface
- + 3D shop floor programming exclusively for DMG MORI
- + Feature-based programming in Shop Mill/Turn directly on the machine
- + Compatibility with SIEMENS 840d Solutionline and 828d

## MACHINE SIGNALS VIA OPC-UA, MTCONNECT AND MQTT

### MACHINE DATA

1. Serial number of the machine
2. Operating hours
3. Machine on hours

### MACHINE STATUS

4. Status display
5. Number of alarms
6. Messages, alarms, warnings
7. Control mode
8. Machine version status

### PRODUCTIVITY

9. Workpiece counter, current
10. Workpiece counter, total
11. Target quantity
12. Current program runtime

### PROCESS DATA

13. Spindle speed correction
14. Fast speed correction
15. Infeed correction
16. Active tool
17. Name of the current NC program

### ADDITIONAL MACHINE SIGNALS

Machine-specific signals, e.g. spindle speed, coolant status etc.

TECHNOLOGIE-ZYKLEN

# Exclusive, optionally available DMG MORI Technology Cycles

## 3D quickSET

- + Tool kit for checking and correcting the kinematic accuracy of 4-axis and 5-axis machine configurations
- + All head variants and each table axis

### CUSTOMER BENEFIT

- + Periodic recalibration of machine with end-to-end documentation
- + Maximum autonomous kinematic accuracy

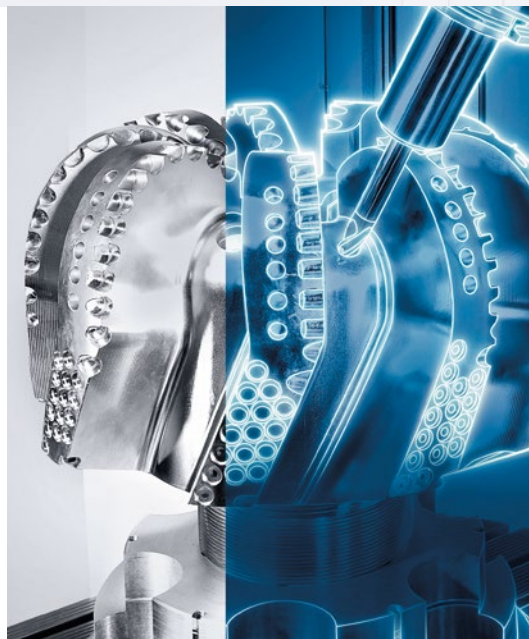


## ATC – APPLICATION TUNING CYCLE

- + Process-oriented adjustment of feed speed in relation to table loading of milling machines
- + Minimum machining time combined with maximum relevant component quality

### CUSTOMER BENEFIT

- + Simple operation for adjusting machine dynamics with drive parameters from DMG MORI
- + Time saving during roughing
- + High surface quality during finishing





## MPC – MACHINE PROTECTION CONTROL

- + In-process vibration monitoring
- + Rapid machine shutdown in the event of a crash
- + Manual free travel even on a tilted working plane

### CUSTOMER BENEFIT

- + Prevention of tool breakage
- + Increase in machine availability
- + Damage reduction

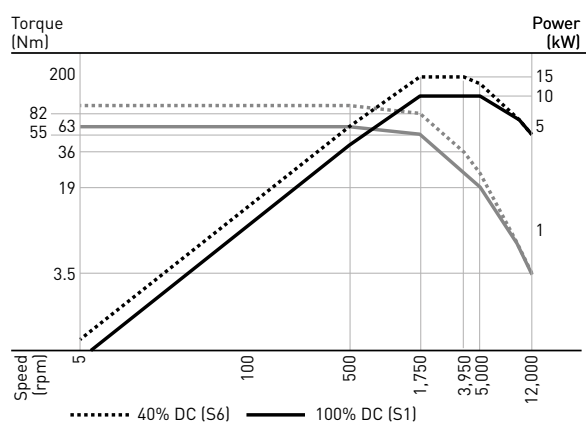


## DMU series

# Performance diagrams

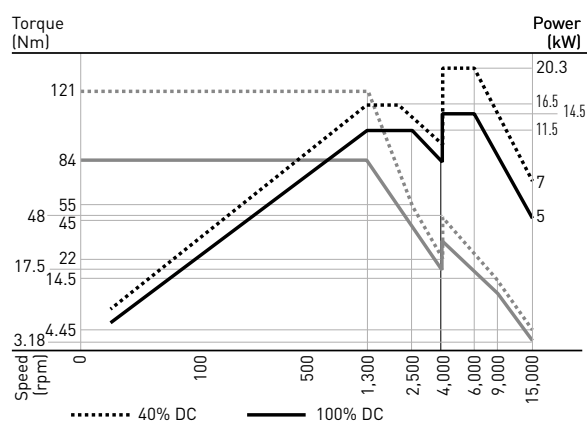
### DMU 40 inline-Spindel SK40/HSK-A63

12,000 rpm / 15 kW / 95 Nm



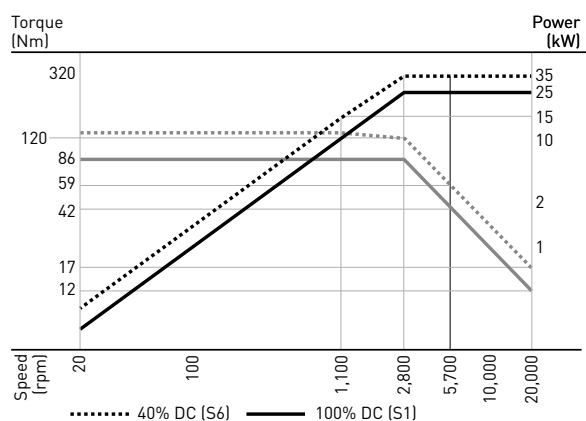
### DMU 40 Plus | DMU 50 3<sup>rd</sup> Generation speedMASTER-Spindel SK40/HSK-A63 (Option)

15,000 rpm / 21 kW / 111 Nm



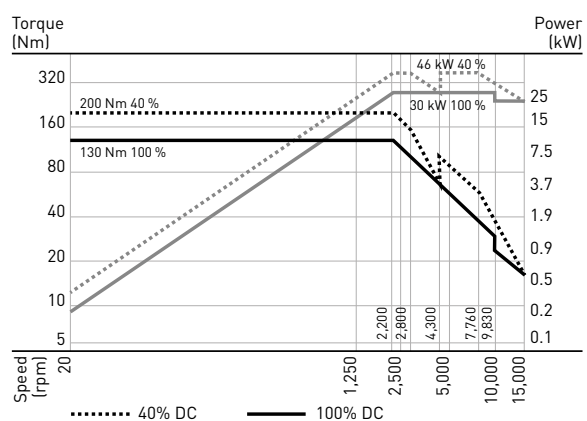
### DMU 40 Pro | DMU 50 3<sup>rd</sup> Generation speedMASTER-Spindel SK40/HSK-A63 (Option)

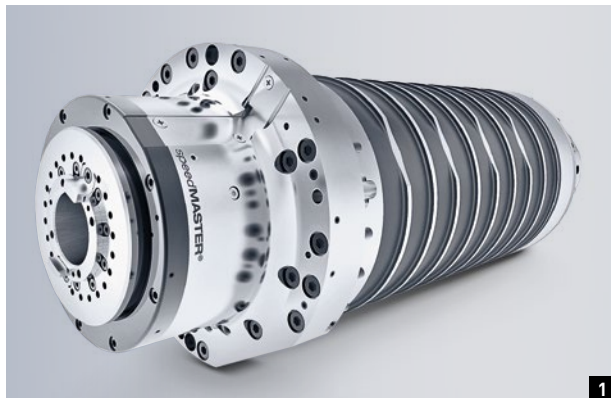
20,000 rpm / 35 kW / 130 Nm



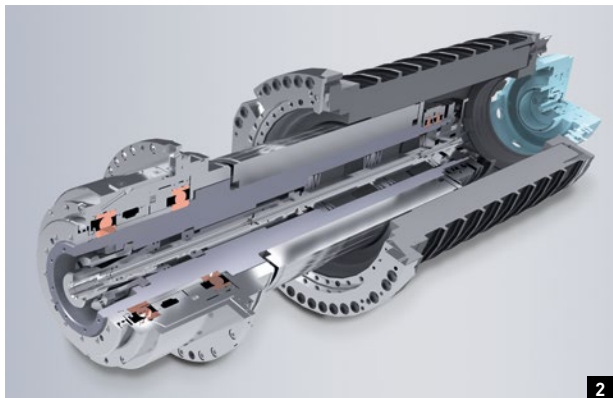
### DMU 50 3<sup>rd</sup> Generation speedMASTER-Spindel SK40/HSK-A63 (Option)

15,000 rpm / 46 kW / 200 Nm





1



2

1: speedMASTER – motor spindles with the best true running accuracy

2: SGS – Spindle Growth Sensor for maximum accuracy by means of monitoring and compensating for spindle misalignment (Option)

## DMU series

# Technical Data

		DMU 40	DMU 40 Plus	DMU 40 Pro	DMU 50
<b>Work area</b>					
Travel X/Y/Z	mm	550/450/420	550/450/420	550/450/420	650/520/475
Distance between spindle nose and table	mm	150	150	150	150
<b>Main drive (standard)</b>					
Speed range	rpm	12,000	15,000	20,000	20 – 15,000
Drive power (40/100 % DC)	kW	15/10	20/11.5	35/25	21/16
Torque (40/100 % DC)	Nm	95/63	121/84	130/86	111/85
Tool holder DIN 69871/DIN 69893		SK40/HSK-A63	SK40/HSK-A63	SK40/HSK-A63	SK40 / HSK-A63
<b>Main drive (option)</b>					
Speed range	rpm	–	–	–	20 – 15,000
Drive power (40/100 % DC)	kW	–	–	–	46/30
Torque (40/100 % DC)	Nm	–	–	–	200/130
<b>Main drive (option)</b>					
Speed range	rpm	–	–	–	20 – 20,000
Drive power (40/100 % DC)	kW	–	–	–	35/25
Torque (40/100 % DC)	Nm	–	–	–	130/86
<b>Feed</b>					
Rapid traverse X/Y/Z	m/min	30/30/30	30/30/30	42/42/30	42/42/42
Acceleration X/Y/Z	m/s <sup>2</sup>	5	5	5	5
<b>Swiveling rotary table</b>					
Clamping surface	mm	ø 505 × 500	ø 505 × 500	ø 505 × 500	ø 630 × 500
B/C-axis speed	rpm	30	30	30	30*
Max. load	kg	300	300	300	300
Swivel range	Grad	– 35/+110	– 35/+110	– 35/+110	–35/+110
<b>Tool magazine with double gripper</b>					
Storage locations	Anzahl	24	30 (60*)	30 (60*)	30/60**/120**
Maximum tool length	mm	300	300	300	300
Tool diameter max. (with free adjacent pocket)	mm	130	130	130	130
Tool weight max.	kg	8	8	8	8
<b>Machine weight</b>					
Weight (with 60 tools/120 tools)	kg	6,500	6,600 (6,900)	6,600 (6,900)	7,480 (7,730/8,110)
Machine width (without SPF)	mm	1,990	1,990	1,990	2,373
Machine depth	mm	2,540	2,540	2,540	2,735
<b>Control</b>					
ERGOLine X control with 24" multi-touch screen, CELOS X and SIEMENS 840D solutionline		–	–	–	•
ERGOLine X control with 24" multi-touch screen, CELOS X and SIEMENS SINUMERIK ONE***		•	•	•	•
ERGOLine X control with 24" multi-touch screen, CELOS X and HEIDENHAIN TNC 7		•	•	•	•

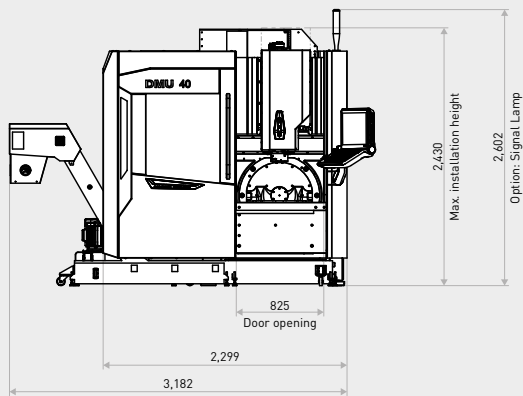
\*For HEIDENHAIN / SIEMENS controls \*\*Option \*\*\*Limited options available



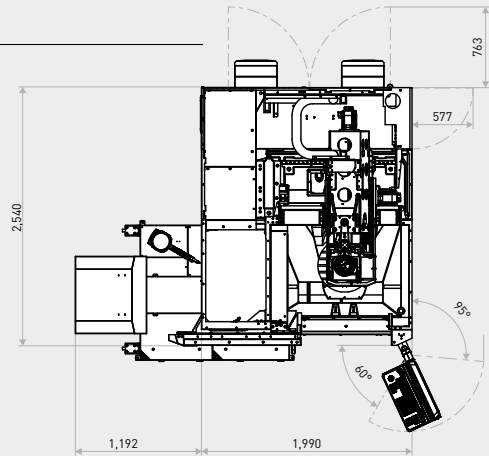
# Floor plans

## DMU 40

Front view

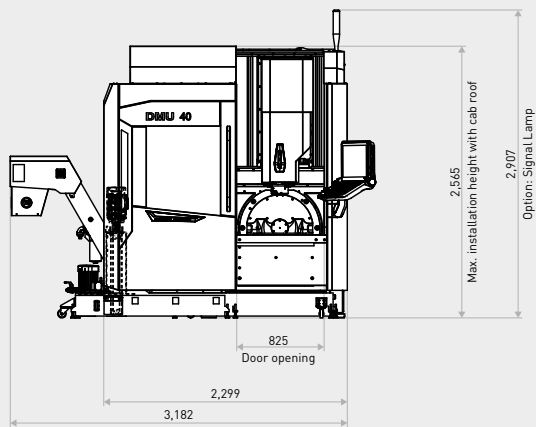


Top view

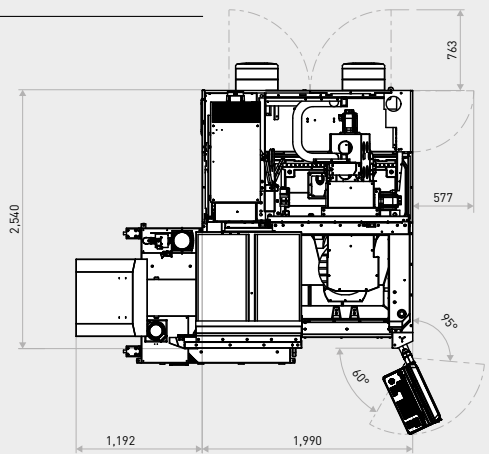


## DMU 40 Plus / DMU 40 Pro

Front view

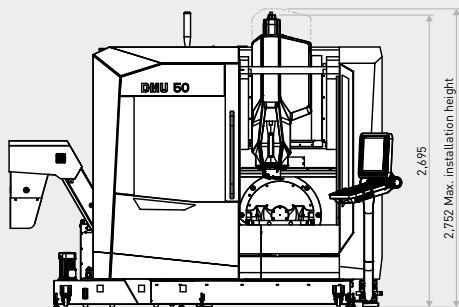


Top view

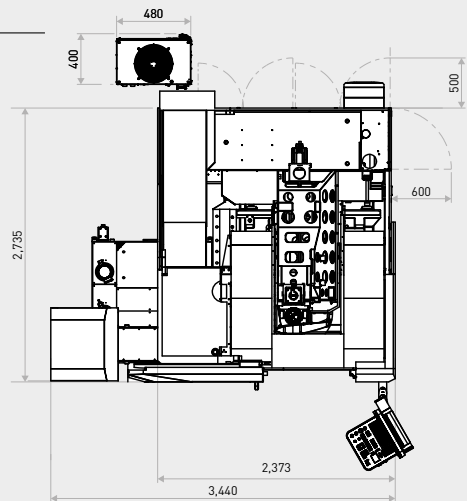


## DMU 50

Front view with 30 tools



Top view with 30 tools



# YOUR ONLINE SERVICE MANAGER

## myDMG MORI

The customer portal for service optimization

### MORE SERVICE

Fast support and live status of your service requests

### MORE KNOWLEDGE

All relevant documents can be called up digitally

### MORE AVAILABILITY

The direct line to a service expert with guaranteed prioritized processing, registration in <3 minutes

**Every customer benefits – at no extra charge!**



All countries in which myDMG MORI is available can be found at: [myDMGMORI.com](http://myDMGMORI.com)



You too can benefit!  
Register now for free:  
[myDMGMORI.com](http://myDMGMORI.com)

## CUSTOMER FIRST – OUR SERVICE PROMISE!

Top quality at fair prices. It's a promise!



### Best price guarantee for original spare parts.

Should you get a spare part offered by us at least 20% cheaper elsewhere, we will refund the price difference up to 100%\*.

\*All information and price advantages for Customer First are available at: [customer-first.dmgmori.com](http://customer-first.dmgmori.com)



### Spindle service at best prices.

The highest level of competence from the manufacturer at new and attractive prices – DMG MORI spindle service!

**Export Control:** Machines and products from DMG MORI may be subject to export restrictions. Therefore, prior export control authorization from competent authorities may be required. To prevent the illegal diversion of the equipment to individuals or nations that threaten international security, every DMG MORI machine is equipped with an RMS function (Relocation Machine Security). The RMS automatically deactivates the machine when the machine is moved or disassembled. Such deactivation does not take place during regular operation or maintenance. If the equipment is so-disabled, it can only be re-activated by DMG MORI or some authorized representatives. Reactivation can be ordered via DMG MORI Service. If the machine is deactivated due to a substantial repair activity, this service is free of charge. DMG MORI may refuse to re-activate the machine if it determines that doing so would be an unauthorized export of technology or otherwise violate applicable export restrictions. DMG MORI shall have no obligation to re-activate such a machine and shall have no liability as a result thereof.